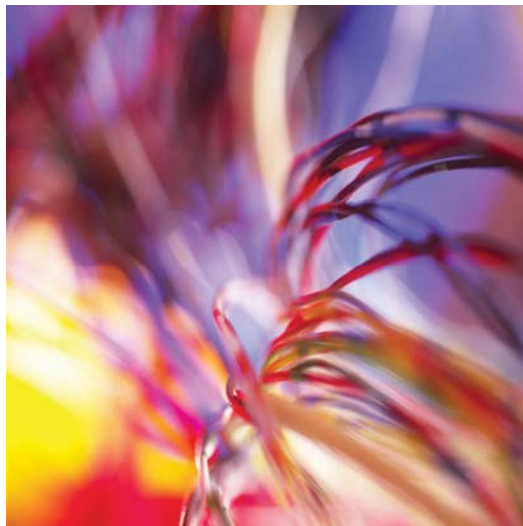




## **Statement of Charges for ESP Electricity Limited's Distributor Metering Point Administration Services**

**(Effective from 1<sup>st</sup> October 2009)**



*This statement has been prepared in a form approved by Ofgem*

**ESP Electricity Ltd  
Hazeldean  
Station Road  
Leatherhead  
Surrey KT22 7AA**

## Version Control

<b>Version Number</b>	<b>Revision Details</b>	<b>Prepared By Date</b>	<b>Approved By Date</b>
1.0	First issue.	DMJohnson 05/04	LWarren 06/04
1.1	Revised charges	DMJohnson 05/05	LWarren 05/05
1.2	Revised charges	DMTownsend 02/07	DGrundy 02/07
2.0	Rebranding	DMTownsend 07/09	VSpiers 08/09
2.1	Removal of data transfer services	DMTownsend 09/09	V Spiers 09/09

## CONTENTS

1.	Introduction.....	3
1.1.	The ESP Electricity Electricity Distribution Business .....	3
1.2.	Purpose of this Statement .....	3
1.3.	Persons Entitled to Apply for Metering Point Administration Services.....	3
1.4.	Procedure for Applying for Metering Point Administration Services.....	4
2.	Charges for Metering Point Services .....	4
2.1.	Basis of Charges .....	4
2.2.	Table of Charges .....	5

# 1. Introduction

## 1.1. The ESP Electricity Electricity Distribution Business

ESP Electricity is an independent electricity distribution business, licensed to design, build, adopt, operate and maintain electricity distribution networks in Great Britain.

This statement has been prepared in a form approved by Ofgem.

## 1.2. Purpose of this Statement

This statement sets out the basis upon which charges will be made for the provision of metering point administration services to enable a supplier to make a reasonable estimate of charges it would be liable to pay for the provision of such services. It is prepared in accordance with the requirements of ESP Electricity's electricity distribution licence issued under the Electricity Act 1989 (as amended by the Utilities Act 2000) and the Master Registration Agreement (MRA).

This statement describes the process for obtaining metering point administration services. The statement also details the costs for each activity which are not included within ESP Electricity's distribution use of system charges (DuoS).

It should be noted that ESP Electricity is not currently a meter asset provider (MAP) or a meter operator (MOP) and therefore does not provide or charge for MAP or MOP services.

## 1.3. Persons Entitled to Apply for Metering Point Administration Services

An applicant applying for the use of ESP Electricity's metering point administration services, in relation to a ESP Electricity network, must be a licensed Electricity Supplier and a signatory to the Master Registration Agreement (MRA) and the Distribution Connection Use of System Agreement (DCUSA). ESP Electricity is also required by its licence to establish or procure data transfer services, these services are provided under contract by Electralink. Persons requiring data transfer services should apply to Electralink directly at:

Electralink  
Grafton House  
2-3 Golden Square,  
London W1F 9HR

**Helpdesk**  
Tel: 020 7432 3017  
helpdesk@electralink.co.uk

## **1.4. Procedure for Applying for Metering Point Administration Services**

An application for metering point administration services should be made in the first instance by telephone, by email or in writing to the following:

MPAS Department  
ESP Electricity Limited  
Hazeldean  
Station Road  
Leatherhead  
Surrey KT22 7AA

or by telephone/fax:

Tel: 01372 227 560  
Fax: 01372 377 996

or by email to:

[electricity@espipelines.com](mailto:electricity@espipelines.com)

Applicants will be required to enter into an agreement with ESP Electricity prior to using the services. This agreement will set out the obligation of both parties, services levels, methods of communicating information and invoicing and payment arrangements.

Where an agreement cannot be reached within a reasonable period then either party may request settlement by the Chairman of the Gas and Electricity Markets Authority.

## **2. Charges for Metering Point Services**

### **2.1. Basis of Charges**

The normal operating costs of providing a metering point administration service (MPAS) are included within ESP Electricity's distribution use of system charges (DUoS).

If an Electricity Supplier should request additional services then a transaction charge will be levied by ESP Electricity. A table of these charges are provided in Section 2.2 overleaf. The charges detailed overleaf are exclusive of VAT.

## 2.2. Table of Charges

The charges set out below are for transactional services associated with the provision of metering point services (MPAS).

<b>Transactional Charges for MPAS</b>		
<b>Activity</b>	<b>Unit</b>	<b>ESP Electricity Charge</b>
1 Provision of a Contact Notice	per notice – manual	<b>£30.00</b>
	per notice – electronic	<b>£5.00</b>
2 Manual Database Amendment	by agreement	Charge will vary according to the number of data items to be changed but typically estimated at £300.00.
3 Full Refresh	per event	<b>£500.00</b>
4 Selective Refresh of Data	per supplier number	<b>£15.00</b>
5 Data Resend (when original data transmission does not reach the intended recipient's gateway)	per resend	<b>£30.00</b>
6 Rejections	per rejection	<b>£5.00</b>
7 Report to Settlement System Administrator	per report	<b>£50.00</b>
8 Report to Elexon Parties	per report	<b>£50.00</b>
9 MPAS Investigations Reports	per report	<b>£50.00</b>
10 Report to Data Aggregator (detailing last file sequence number)	per report	<b>£50.00</b>

End of document